

Schulz and Co. Realty

Bill Schulz, Broker

P.O. Box 6

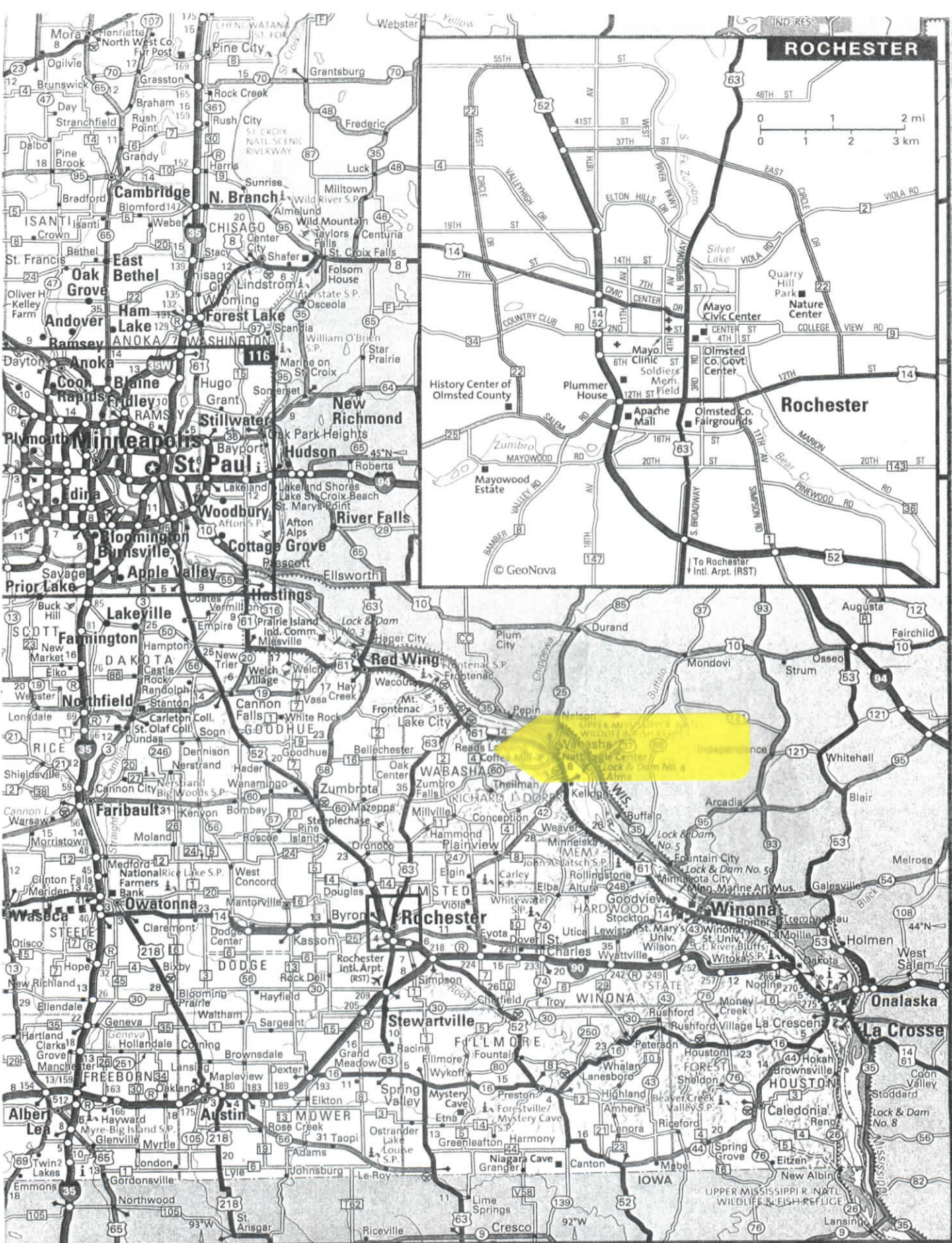
Goodhue, MN 55027

Phone: 651-923-4769 • Fax: 651-923-5096

COLE FARMS

LISTED PRICE	\$ 875,000
APPROX. ACRES	107.5
APPROX. TILLABLE ACRES – See Attached FSA Aerial Map	
2020 TAXES	\$ 2,076

This information sheet is subject to errors and omissions. Schulz And Company Realty and Broker Willard B. Schulz do not assume the responsibility for the accuracy of the information contained in this document.



ROCHESTER

0 1 2 mi
0 1 2 3 km

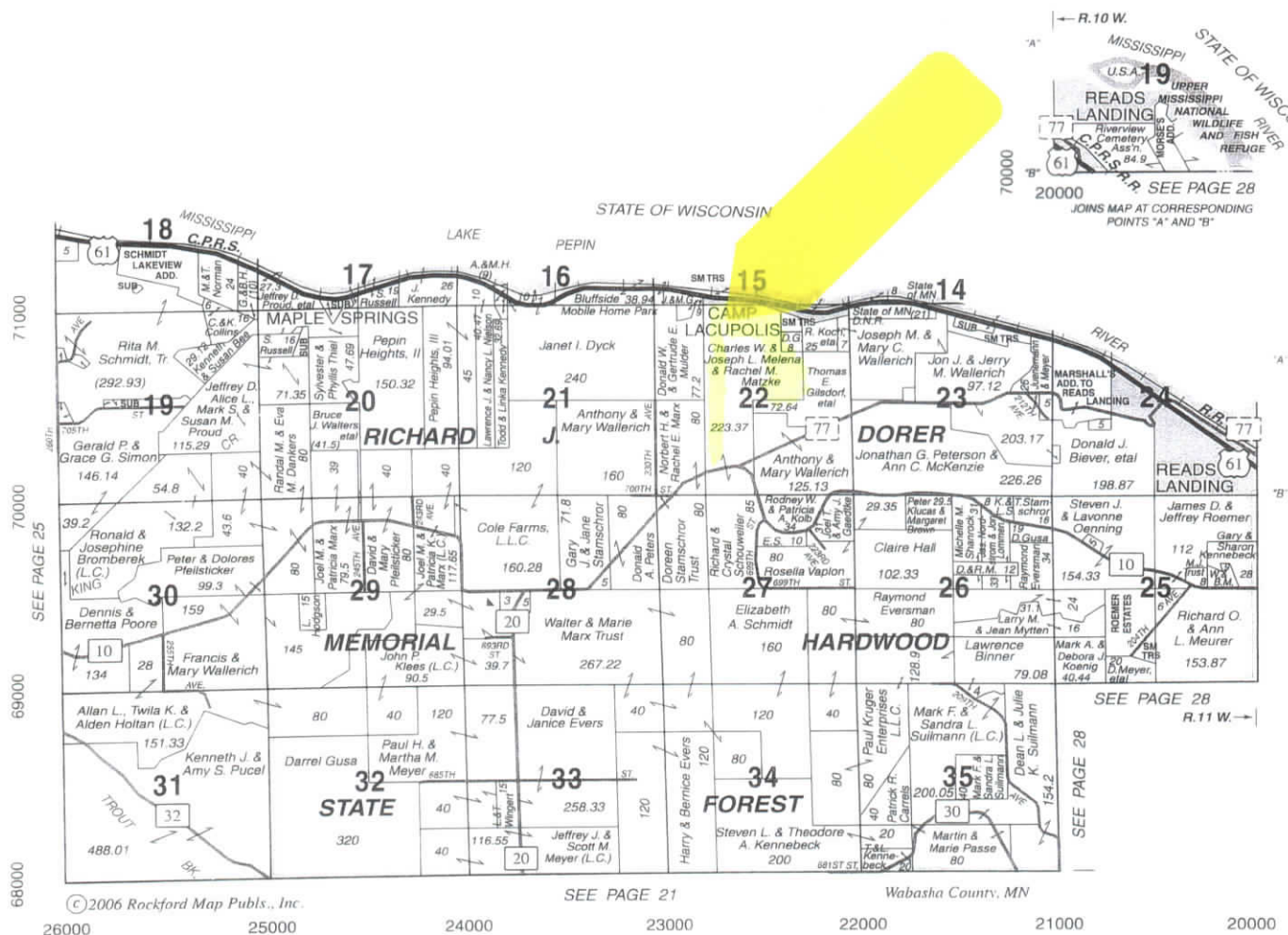
Rochester

Wabasha

Onalaska

La Crosse

T.111N.-R.11-10 W.





United States
Department of
Agriculture

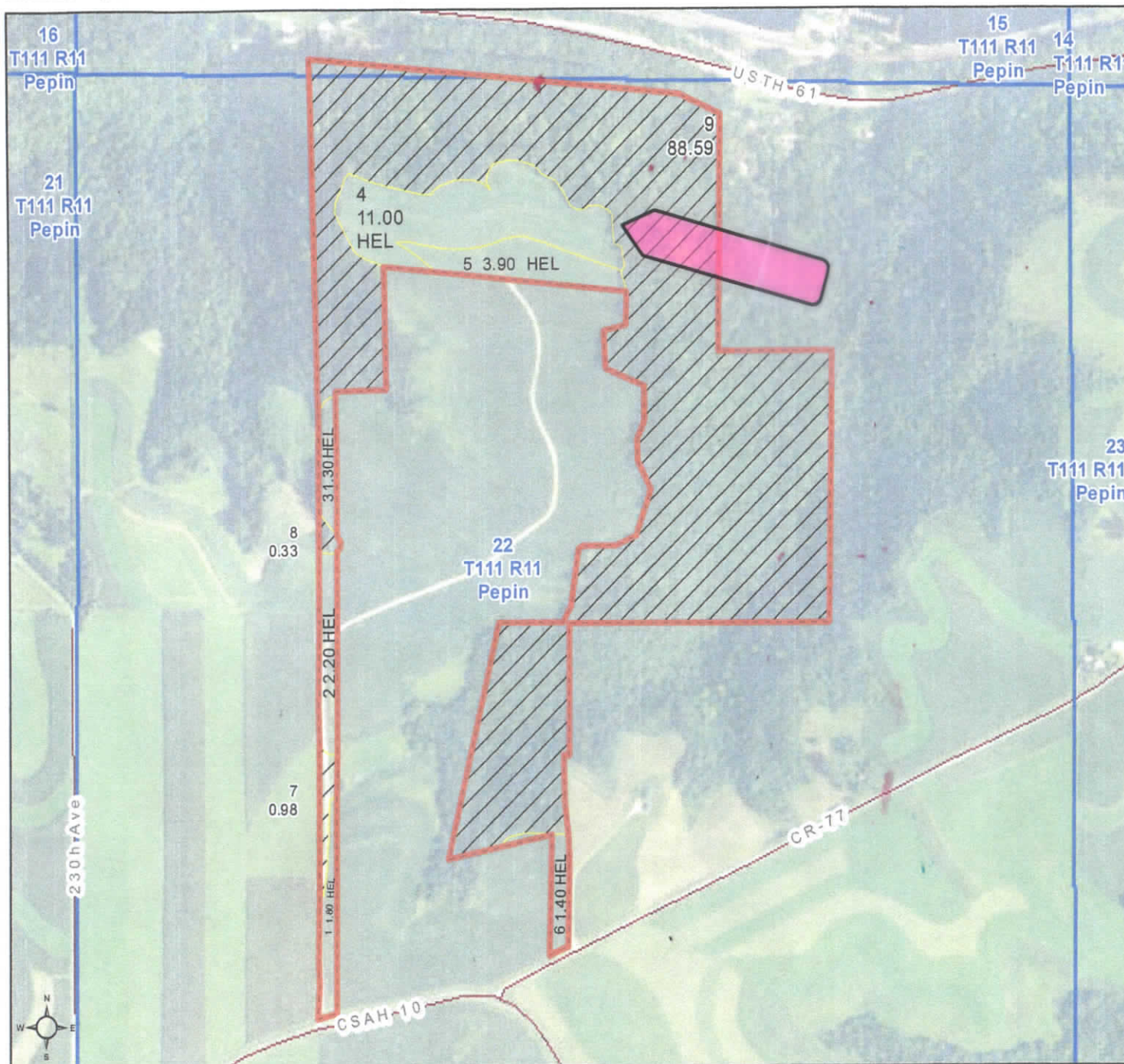
Wabasha County, Minnesota

Farm 4525

Tract 4689

2019 Program Year

Map Created May 17, 2019



Unless otherwise noted:
Shares are 100% operator
Crops are non-irrigated
Corn = yellow for grain
Soybeans = common soybeans for grain
Wheat = HRS, HRW = Grain
Sunflower = Oil, Non-Oil = Grain
Oats and Barley = Spring for grain
Rye = for grain
Peas = process
Alfalfa, Mixed Forage AGM, GMA, IGS = for forage
Beans = Dry Edible
NAG = for GZ
Canola = Spring for seed

Common Land Unit

- Non-Cropland
- Cropland
- Tract Boundary

Wetland Determination Identifiers

- Restricted Use
- Limited Restrictions
- Exempt from Conservation
- Compliance Provisions

Tract Cropland Total: 21.60 acres

United States Department of Agriculture (USDA) Farm Service Agency (FSA) maps are for FSA Program administration only. This map does not represent a legal survey or reflect actual ownership; rather it depicts the information provided directly from the producer and/or National Agricultural Imagery Program (NAIP) imagery. The producer accepts the data 'as is' and assumes all risks associated with its use. USDA-FSA assumes no responsibility for actual or consequential damage incurred as a result of any user's reliance on this data outside FSA Programs. Wetland identifiers do not represent the size, shape, or specific determination of the area. Refer to your original determination (CPA-026 and attached maps) for exact boundaries and determinations or contact USDA Natural Resources Conservation Service (NRCS). This map displays the 2017 NAIP imagery.